

The Future is Now Instructions

1. Download the .zip file package to your computer.
2. Extract the contents of the .zip file to a folder on your computer.
3. Open the folder with the extracted files.
4. **Open “The Future Is Now.html” in a web browser of your choice.**
5. The Future Is Now should now be running.

If you have any issues getting the product to work, please contact CAPE.

Email: capeweb@usma.edu

Phone: 845-938-0467

<http://cape.army.mil/contactus.php>

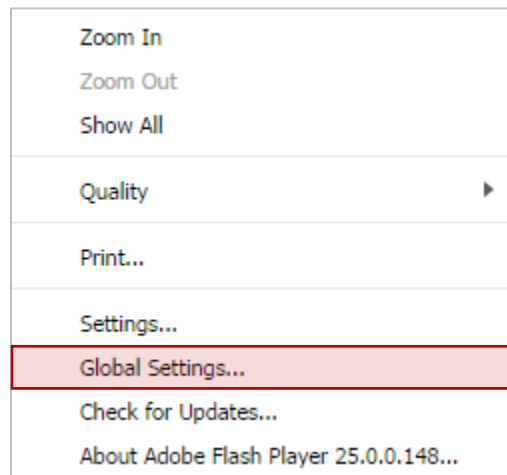
Extra Considerations

This product runs on Flash. Ensure Flash is installed and enabled in your web browser.

When accessing local files in a web browser with Flash, you may need to adjust the Flash security settings to allow the product to launch properly. Follow the instructions below.

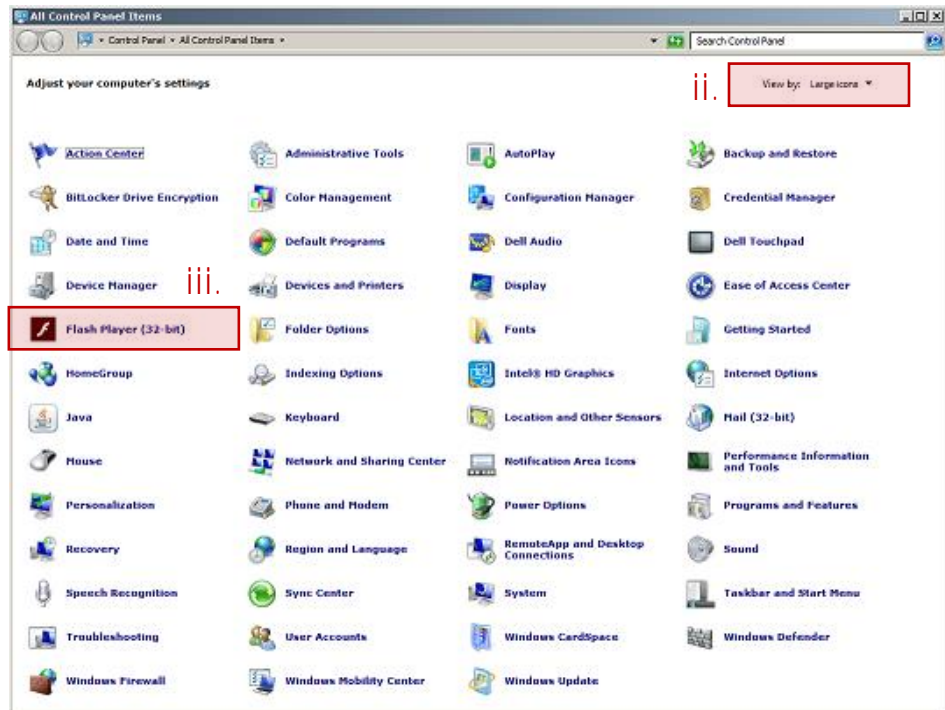
If you have Flash Player 10.3 or above:

1. First, open the Flash Player Settings Manager Window. This can be done one of two ways:
 - a. Option 1:
 - i. Launch the product in the web browser you plan to use.
 - ii. Right-click on the content area of the first page to bring up the Flash menu. Select **“Global Settings...”**

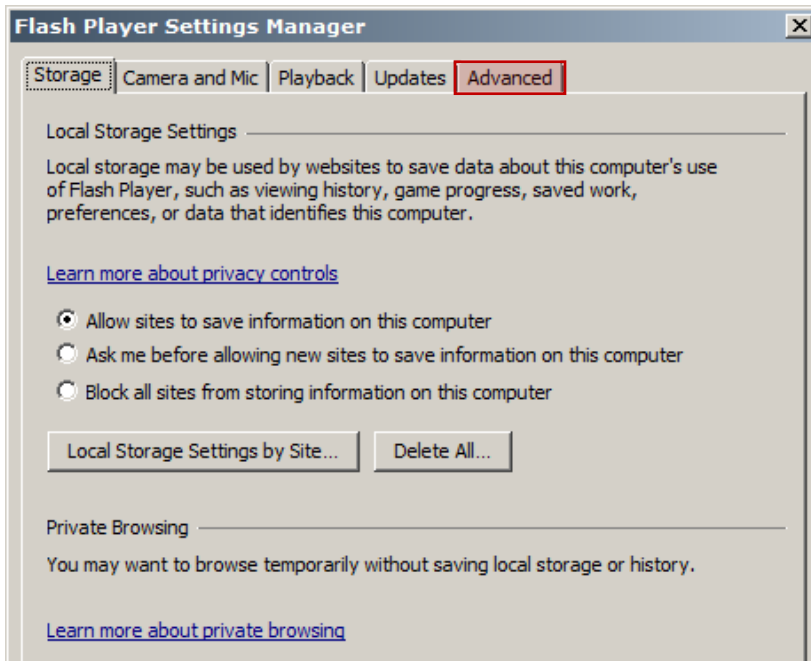


b. Option 2:

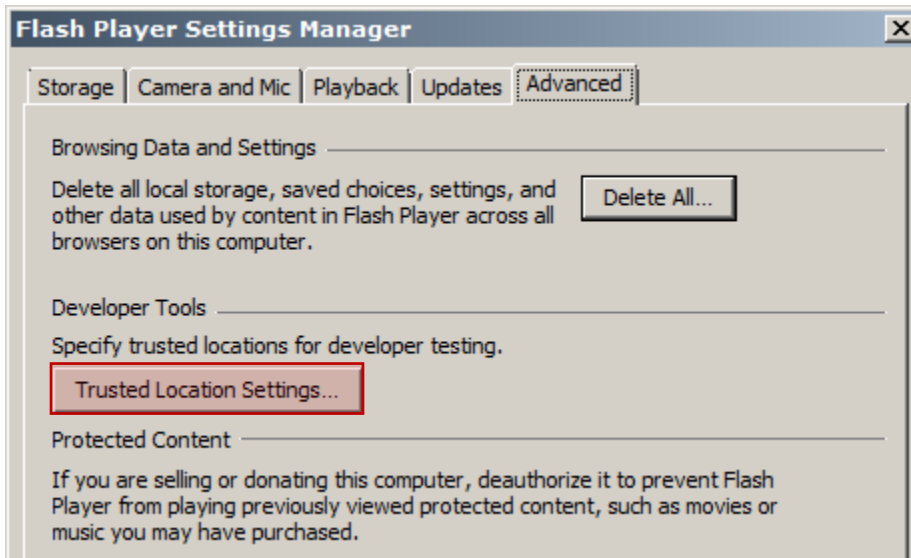
- i. Go to the “Start” menu and open the “Control Panel.”
- ii. Make sure the “View by” setting is set to “Large icons” or “Small icons.”
- iii. Locate and open “Flash Player.”



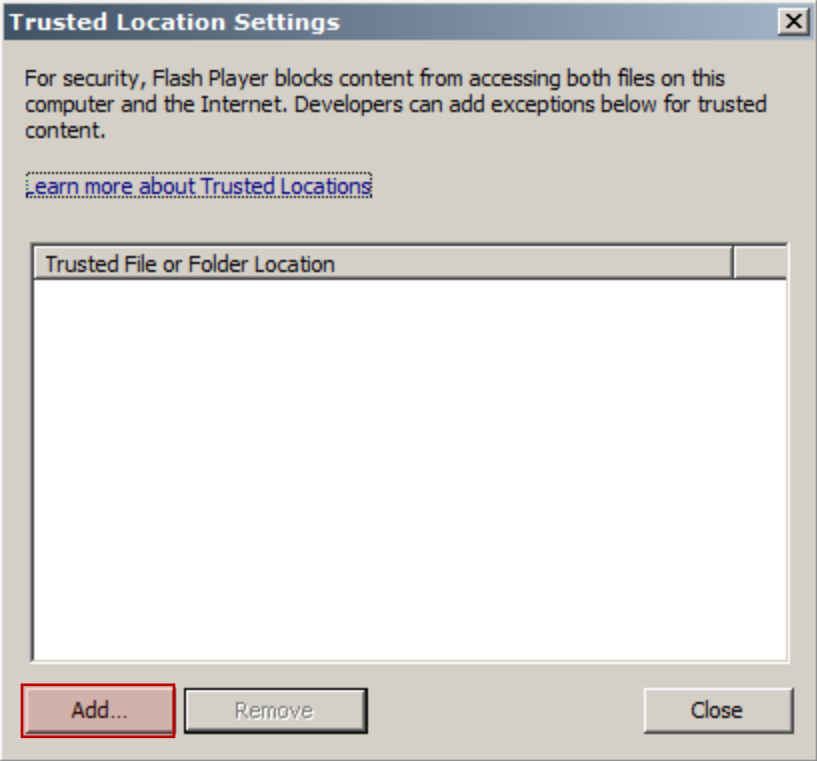
2. Select the “Advanced” tab in the Flash Player Settings Manager Window



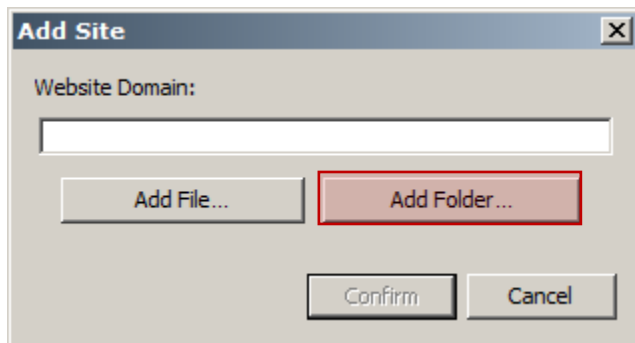
3. Click the “Trusted Location Settings...” button at the bottom of the screen.



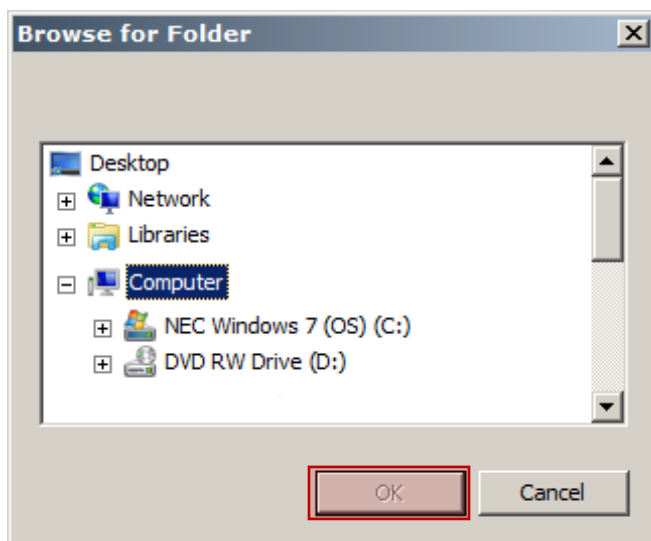
4. Click the “Add...” button.



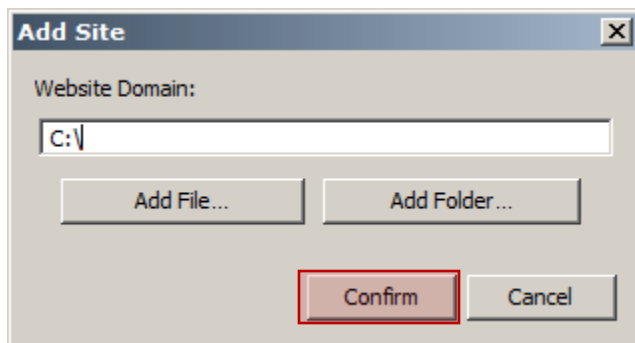
5. Click the “Add Folder...” button.



6. Navigate to the folder with the product and click “OK.”



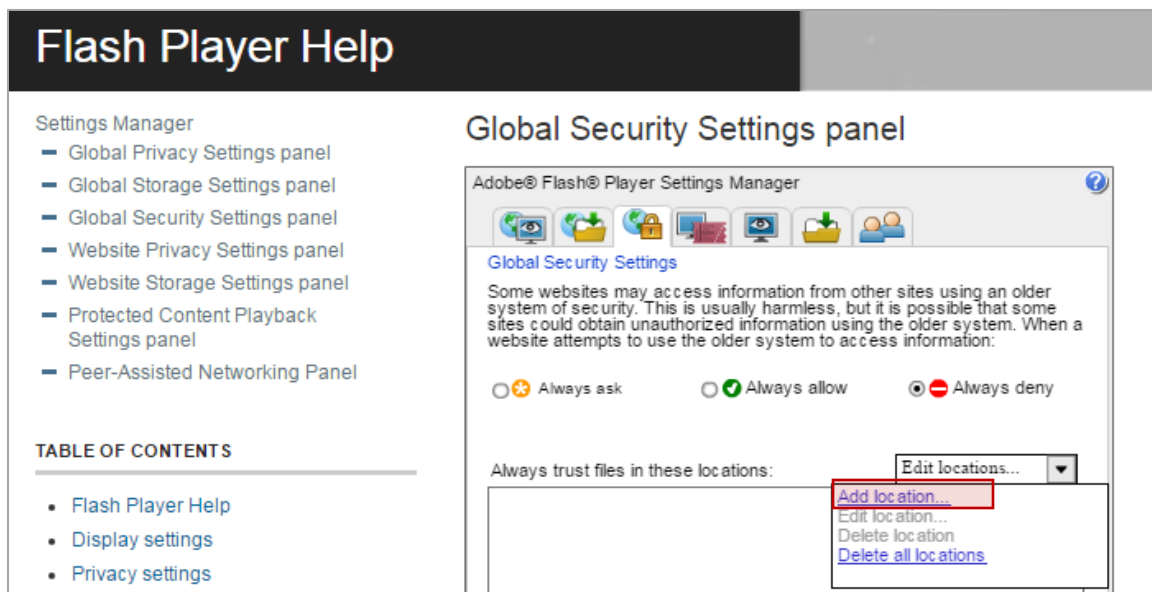
7. The path should now be displayed in the Website Domain box. Click “Confirm.”



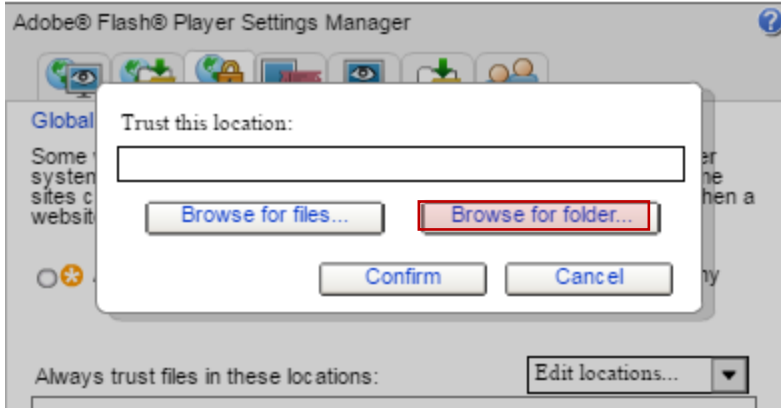
8. Click close on the Trusted Location Settings Window and close the Flash Player Security Settings Window.
9. Exit your browser and restart the product.

If you have Flash Player below version 10.3:
(Or you are using Google Chrome or a Chromium-based browser)

1. Open the web browser that you plan to use and go to:
http://www.macromedia.com/support/documentation/en/flashplayer/help/settings_manager04.html
2. The link above should take you directly to the “Global Security Settings Panel.” If it does not, select the “Global Security Settings Panel” from the Settings Manager list on the left.
3. Click the “Edit locations” drop-down in the security settings panel. Select “Add location.”



4. Click “Browse for folder...” then navigate to the location of the product and click “OK” or “Open,” depending upon the version of Windows you are using.



5. Check to be sure the location you selected is now listed in the “Always trust files from these locations” list.
6. You should now be able to run the files. If you move the files to another location, you must repeat these steps for the new location.